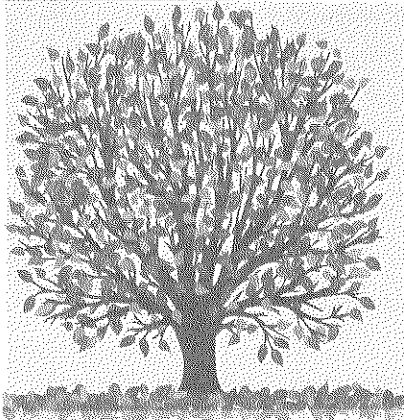


Keep for Fall / Winter  
Information



2018 FALL/WINTER NEWSLETTER

# Lisle Township Road District

## Leaf Pick-Up To Begin Monday, Oct. 22nd

The Lisle Township Road District will pick up your raked leaves beginning Monday, Oct. 22 through Thanksgiving week, weather permitting.

### Remember These Dates

**Mon. 10/22—First pick-up starts**

**Mon. 11/19—Last pick-up starts**

The township leaf program is designed to assist homeowners clean up their lawns, but may not accommodate every type of tree. If you must get rid of leaves before or after those dates, please make other arrangements. Leaves may be used as mulch in your garden or landscaped areas, or put into bags as yard waste for your waste hauler.

The fields where we deposit leaves closes about Dec. 1. Our last pick-up must end before that date.

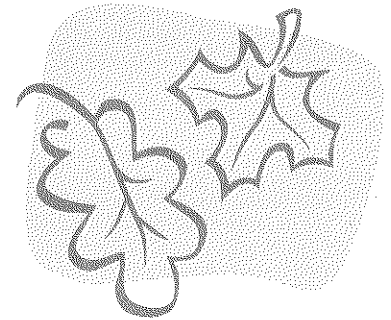
The leaf program will stop prematurely if we have an early snowfall or icy streets before Thanksgiving. These same trucks must be converted to plow and spread salt. You will then be responsible to clear away the

leaves that are left.

Only leaves should be in the leaf piles. Do not leave objects such as logs or rocks as it will jam our leaf loader and cause an interruption while repairs are made.

We welcome calls to our office with questions about the program, but we cannot tell you when we will be on your street. Leaf pick-up may take from 2 to 7 days, which makes it impossible for us to predict specific pick-up dates or times or locations in advance. We can tell you when our leaf machine was last on your street.

Please read and keep the following guidelines. Note, it is dangerous to rake your leaves into the street—keep them on the parkway, behind the curb or shoulder.



### Guidelines for Leaf Pick-Up

- Rake leaves onto the parkway between the sidewalk and the curb, or between the ditch line and the edge of the road.
- Keep the streets free and clear of leaves.
- Don't allow leaves to clog ditches or storm drains.
- Don't put leaves in bags for us.
- MONDAY, OCT. 22 is the FIRST day for pick-up.
- MONDAY, NOV. 19, before 6:30 a.m. is the LAST time to put leaves in the parkway.
- Pick-up ends if snow or ice appears.

## Commissioner's Corner—from Ed Young

---

Each season I am surprised at how quickly the time passes as we are now in the process of preparing for winter and picking up the fall leaves.

This summer was a busy one with the staff completing their normal duties as well as replacing two large under road culverts ( 60 ft. by 6 ft.) and installing, along DuPage Dr., a new storm sewer line. DuPage County helped fund the new storm sewer and, as always, was a great partner to work with. The County also led an effort to streamline compliance and reporting for State mandated storm water monitoring that addresses the needs of the Illinois Environmental Protection Agency and saves all of the Township Road Districts annual administrative fees.

I have continued to reach out to the Naperville Township Highway Commissioner to begin a dialog on the consolidation approved by both Townships' electorate in April 2017. To date, no discussions have occurred. We

will continue to attempt to begin dialogues on this very important topic.

Bill Liszka, our most senior employee, retired this summer with over 31 years of service. We will miss Bill's exceptional work ethic as well as his sense of humor. Marty Srail has been promoted to take Bill's foreman position and is doing an excellent job. Once again, we were fortunate to find a great new staff member, Andrew Bark. Andrew has a commendable work ethic and is familiar with most of our equipment.

If you ever see any unsafe road conditions, please contact the Sheriff immediately. The Sheriff will then contact us. If you have any concerns or suggestions feel free to contact us as we enjoy talking with our constituents.

Lastly, I want to thank the Road District staff whose day to day efforts clearly demonstrate a dedication to the continuous improvement of Lisle Township Road District.

## Senior Car Care Clinic—Saturday, October 13, 2018

---



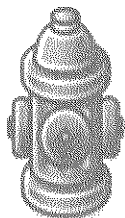
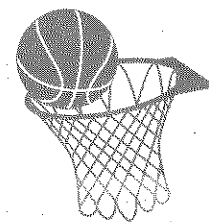
Lisle Township will again be the host location for this year's very popular Senior Car Care Clinic. This bi-annual event is hosted by Naperville/Lisle TRIAD and presents programs to enhance safety

and help increase senior involvement in community programs. This Fall event will be located at our garage adjacent to the Supervisor's building at 4711 Indiana Ave. **Saturday, October 13, 2018 8:00am—12:00pm.** Additional information is available at <http://www.lisletownship.com/senior-services/triad/>.

## Be A Good Township Neighbor

---

**Basketball Hoops:** Lisle Township Road District respectfully asks that you to please remove your portable basketball hoops in the township right-of-ways, streets and cul-de-sacs. They are not allowed under any circumstances and pose a danger to our crews maintaining your roads and our community. Your attention in this matter is greatly appreciated.



**KEEP FIRE HYDRANTS** visible all winter to ensure the well-being and safety of your home and neighborhood. Your fire department requests that you clear snow away from a fire hydrant that may be in front of your home. **DON'T PLOW SNOW** into the street from your driveway. That creates unexpected slippery spots that are hazardous to drivers.

**Leaf Piles:** Please do not park your cars in front of leaf piles raked to the parkway for pick up. Our equipment is unable to remove them up by obstructing vehicles.



# No Parking Rules in Effect When Snow is Two Inches

THE CRITICAL LIMIT of snow accumulation is two inches—that's when our crew starts plowing and when no cars should be parked on township streets, according to a Lisle Township ordinance. The ordinance also mandates that the parking ban stay in effect for 24 hours after the snowfall so the streets can be cleared.

When the snowfall is heavier, our plows will clear center lanes first for vehicle traffic. After all center lanes are opened and clear they plow the parking lanes. The heavier the snowfall the longer it takes to plow.

**PLEASE DO NOT PARK ON THE STREETS UNTIL ALL SNOW IS REMOVED.** Any vehicle violating the ordinance may be ticketed and fined, or even towed. Please notify visitors and all members of your household about the 2 inch snowfall parking ban.

The township road crew is always on call in the winter season. In some situations our red trucks may pre-wet the roads with a brine solution to keep the surface safer when snow first starts to fall. We spread salt when ice or snow accumulates and affects traffic.

We plow arterial and secondary streets first. Cul-de-sacs and dead ends are done last. This system keeps open

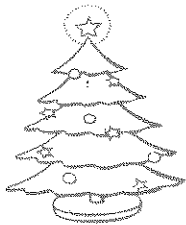
the roads that serve the greatest number of people.

For the safety of our crew and equipment, do not leave objects such as rocks, fences, hedges or timbers on the parkway. Homeowners may be liable for damages or injuries those objects may cause. Use a reflector on a 1/2 inch thick aluminum stake if you wish to mark your property edge.

Our snowplows have large blades that can push a great amount of snow toward the curb or shoulder. Most mailboxes, properly installed, can withstand heavy slush. The **township is not responsible** for damage done to mailboxes knocked over by heavy snow or slush.



## Christmas Tree Collection



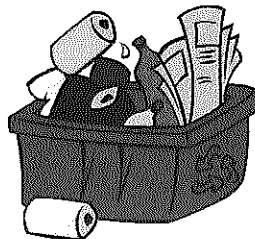
Republic Services offers free Christmas tree collection during the first two full weeks of January on your regular service day. Trees must be free of tinsel and ornaments and should not be placed in bags. For additional information, please visit [www.republiconline.com](http://www.republiconline.com) or call them at 630-964-3232.

## RECYCLING

The average American generates 4.4 pounds of trash per day, adding to the grand total of about 258 million tons of trash the United States accumulates per year. American communities recycled and composted nearly 35% of municipal solid waste in 2014, diverting 89 million tons to recovery according to the U.S. EPA.

### WHAT CAN I RECYCLE: TOP 10 IN THE BIN

1. CARDBOARD
2. PAPER
3. FOOD BOXES
4. MAIL
5. BEVERAGE CANS
6. FOOD CANS
7. GLASS BOTTLES
8. JARS (GLASS & PLASTIC)
9. JUGS
10. PLASTIC BOTTLES & CAPS



### NON-RECYCLABLE:

1. AEROSOL CANS
2. ALUMINUM OIL
3. BATTERIES
4. FOOD WASTE
5. MIRRORS OR CERAMICS
6. STICKERS & ADDRESS LABELS
7. STYROFOAM
8. TISSUE, PAPER TOWELS OR NAPKINS



For more information on recyclables, visit [www.RepublicServices.com](http://www.RepublicServices.com) or [www.iwanttoberecycled.org](http://www.iwanttoberecycled.org).

# 2018 FALL/WINTER NEWSLETTER

Presort  
First Class Mail  
US Postage  
PAID  
Downers Grove IL  
Permit No 770

**Lisle Township Road District**  
4719 Indiana Ave.  
Lisle, IL 60532

*Ed Young, Highway Commissioner*

**Phone: 630-964-0057**  
**Email: highway@lisletownship.com**  
**Web site: lisletownship.com**  
**Fax: 630-964-7244**

2\*\*\*405\*\*\*\*\*AUTO\*\*SCH 5-DIGIT 60532



RESIDENT C020  
4719 INDIANA AVE  
LISLE IL 60532-1610

*Road services in unincorporated  
Lisle Township*



## Numbers to Note

Lisle Township Road District: 630-964-0057  
Office Hours -- Monday through Friday  
7 a.m. to 3 p.m.

Highway Commissioner--Ed Young 630-964-0057  
Supervisor—Mary Jo Mullen 630-968-2087  
General Assistance 630-968-2087  
Youth & Family Services 630-968-1880  
Assessor—John Trowbridge 630-968-1183

## Some Frequently Requested Phone Numbers

DuPage County:

Storm Water Division	630-407-6700
Building Division	630-407-6700
Zoning Division	630-407-6700
Public Works (sewer & water)	630-407-6800
Div. of Transportation (roads)	630-407-6900
Animal Control	630-407-2800
Health Department	630-682-7400
Sheriff (non-emergency)	630-407-2400
Republic / Allied Waste	630-964-3232
JULIE (Call Before Digging!)	811
NICOR (gas company)	888-642-6748
ComEd (electric company)	800-334-7661
Illinois American Water	800-422-2782

